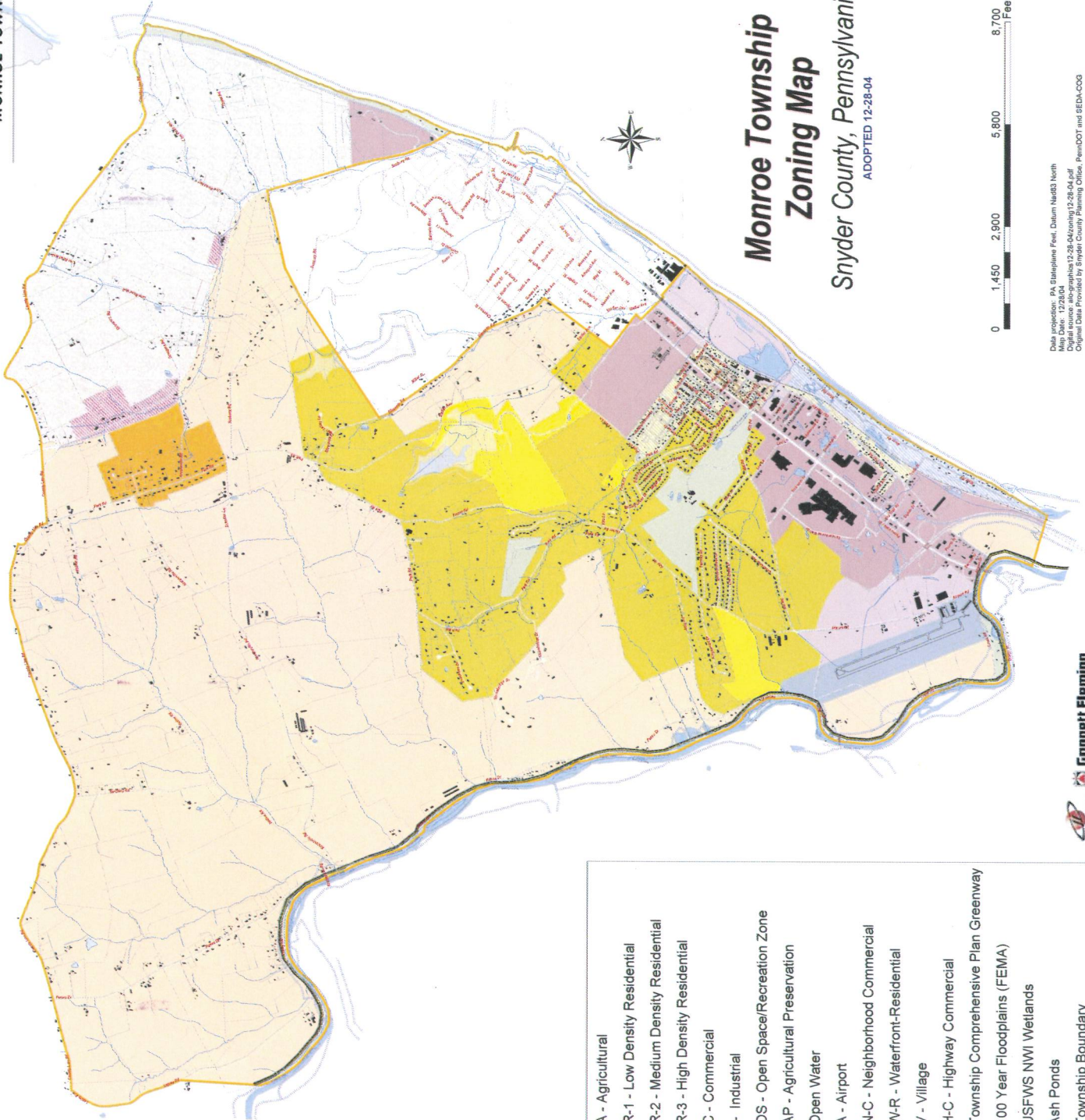


# Monroe Township Zoning Map

Snyder County, Pennsylvania  
ADOPTED 12-28-04



Data projection: PA Stateplane Feet, Datum NAD83 North  
 Digital source: abographus12-28-04zoning12-28-04.pdf  
 Original Data Provided by Snyder County Planning Office, PennDOT and BEDA-COG



	A - Agricultural
	R-1 - Low Density Residential
	R-2 - Medium Density Residential
	R-3 - High Density Residential
	C - Commercial
	I - Industrial
	OS - Open Space/Recreation Zone
	AP - Agricultural Preservation
	Open Water
	A - Airport
	N-C - Neighborhood Commercial
	W-R - Waterfront-Residential
	V - Village
	H-C - Highway Commercial
	Township Comprehensive Plan Greenway
	100 Year Floodplains (FEMA)
	USFWS NWI Wetlands
	Ash Ponds
	Township Boundary